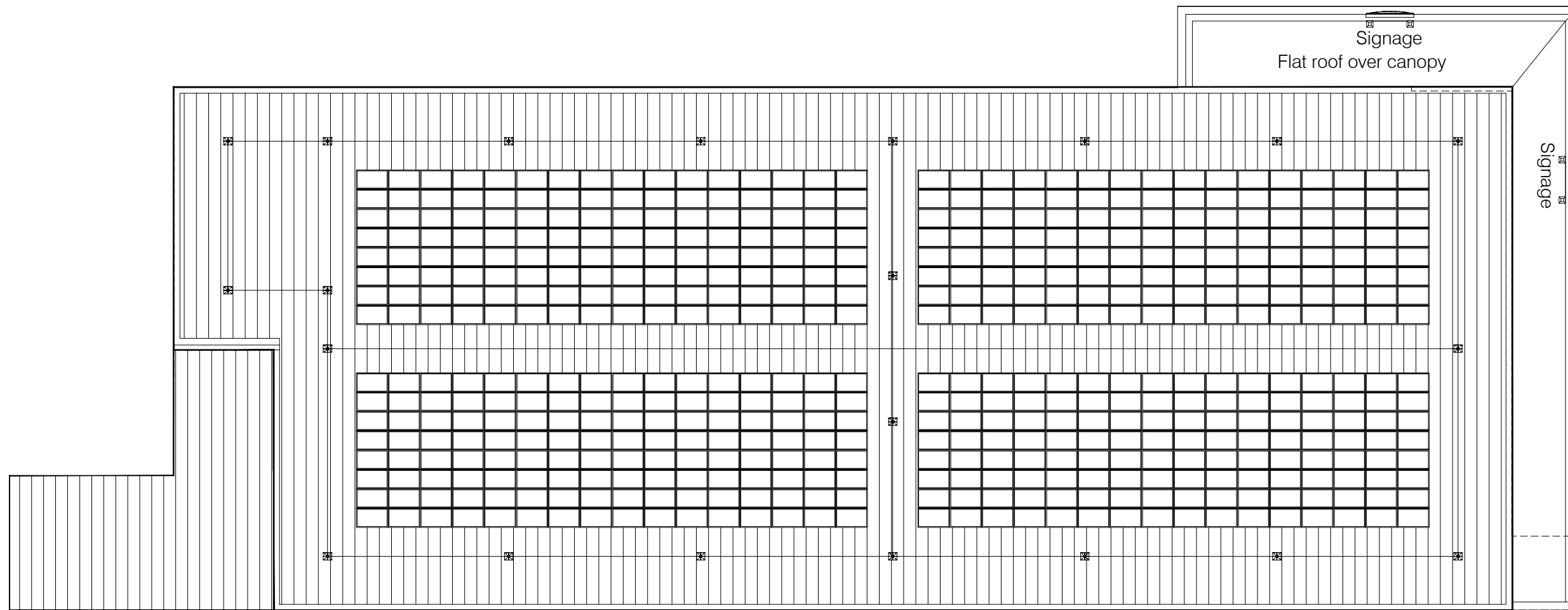




clients logo



Proposed Roof Plan

REV	DATE	DESCRIPTION	BY
-----	------	-------------	----

IN CASE OF DOUBT OR DISCREPANCIES PLEASE REFER TO ARCHITECT FOR INSTRUCTIONS.
DRAWING AND SUITABILITY NUMBERS IN ACCORDANCE WITH BS1192:2007.
THIS DRAWING SHOULD NOT BE SCALED.
THIS DRAWING IS COPYRIGHT.

SUITABILITY NUMBER KEY:

WIP	S0 - Work in Progress*	DOCUMENTATION - SIGN-OFF
SHARED	S1 - Fit for co-ordination**	A - Fit for construction
	S2 - Fit for information	B - Fit for construction, with comments
	S3 - Fit for internal review and comment	C - Comprehensive revisions needed
	S4 - Fit for construction approval	ARCHIVE
DOCUMENTATION	D1 - Fit for costing	AB - As Built
	D2 - Fit for tender	FC - Final Construction
	D3 - Fit for contractor design	* For internal pre-issue usage only.
	D4 - Fit for manufacture/procurement	** For model file usage only.

boyesrees architects

4th Floor, Greyfriars House
Greyfriars Road, Cardiff CF10 3AL
Tel: 029 2055 8900 Fax: 029 2039 9592
www.boyesrees.co.uk

Registered office: As above Reg No. 295 1583 (England & Wales)

PROJECT TITLE:
Proposed Lidl store at Atlas Trade Park, Fraser Road Erith Kent

DRAWING TITLE:
Proposed Roof Plan

DRAWN BY: **WW** SCALE: **1:250 @ A3**

JOB NO: **5508** DATE: **August 2019**

SUITABILITY: **S0** REVISION: **-**

PROJECT	ORIGIN.	VOLUME	LEVEL	TYPE	DISCIP.	NUMBER
5508	BR	V01	RF	DR	A	012014

